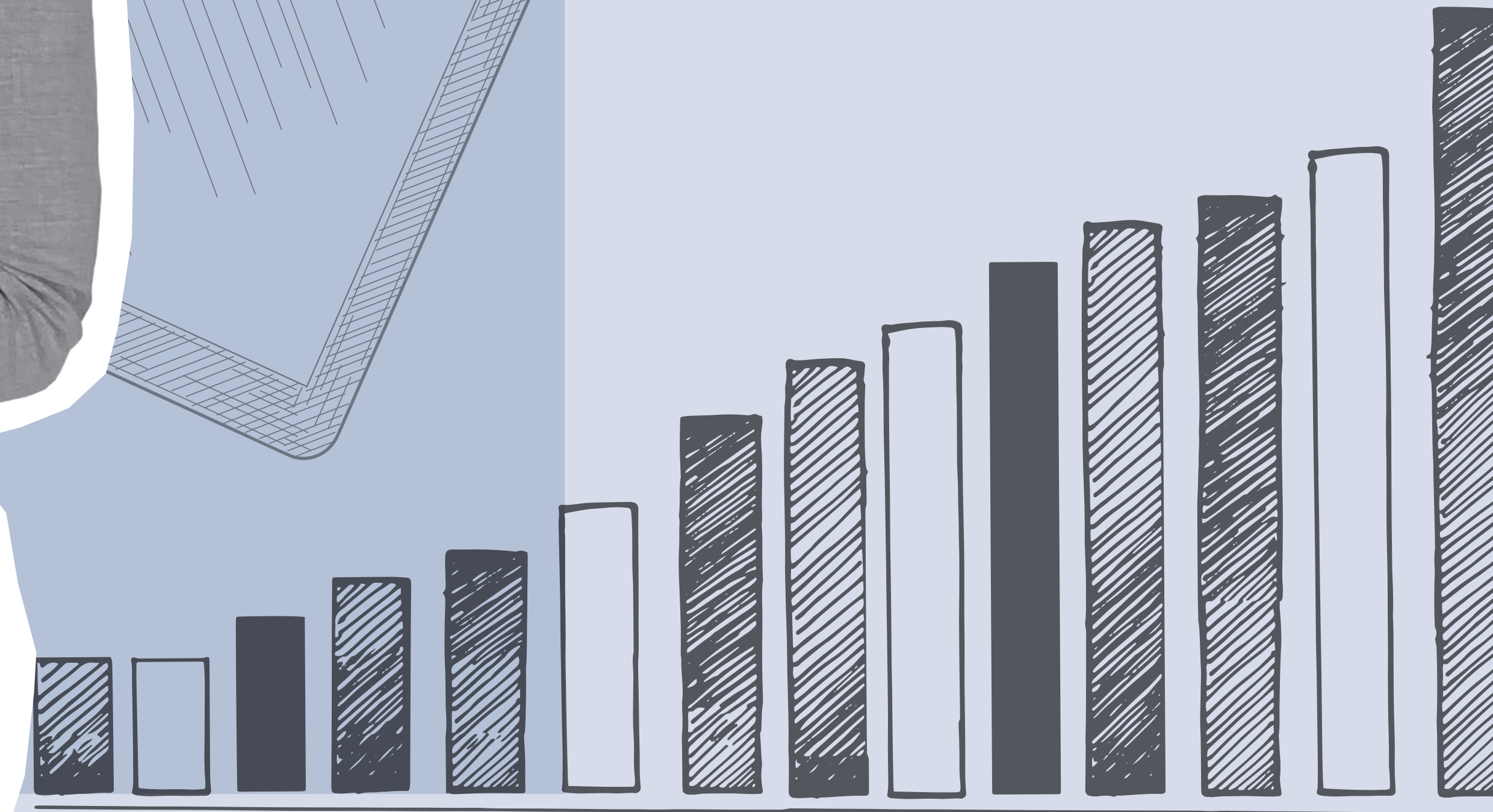


ALENA NAIKSHINA

DEVELOPER-CENTERED SECURITY



DESIGN OF SECURITY STUDIES



BEHAVIORAL SECURITY

DEVELOPER STUDIES

USABLE SECURITY AND PRIVACY

# WOMEN IN IT SECURITY

Alena Naiakshina is Assistant Professor for Developer-Centered Security at Ruhr-Universität Bochum (RUB), Germany and PI within the Cluster of Excellence "Cyber Security in the Age of Large-Scale Adversaries" (CASA).

Her research focuses on the security behavior of software developers and the design of security developer studies. She received her PhD from the University of Bonn, where she was part of the BeSec (Behavioral Security) research group.



[casa.rub.de](http://casa.rub.de) | [hgi.rub.de](http://hgi.rub.de)

Concept and Design: HGI Annika Gödde & Conny Robrahn  
Bildnachweise: Alena Naiakshina; stock.adobe.com: Qualit Design, EvgeniyBobrov, istry, natrot, SurfupVector

