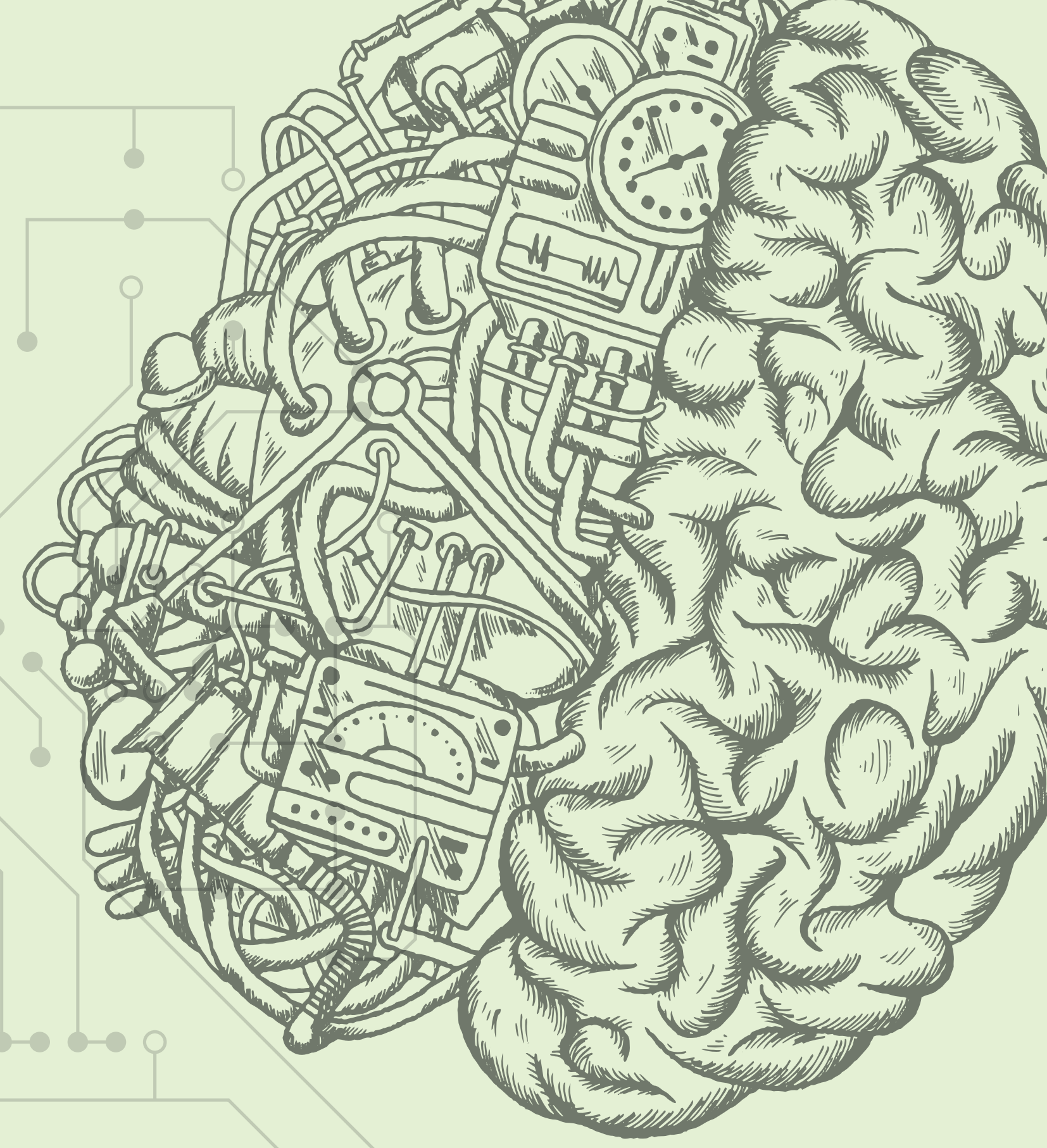
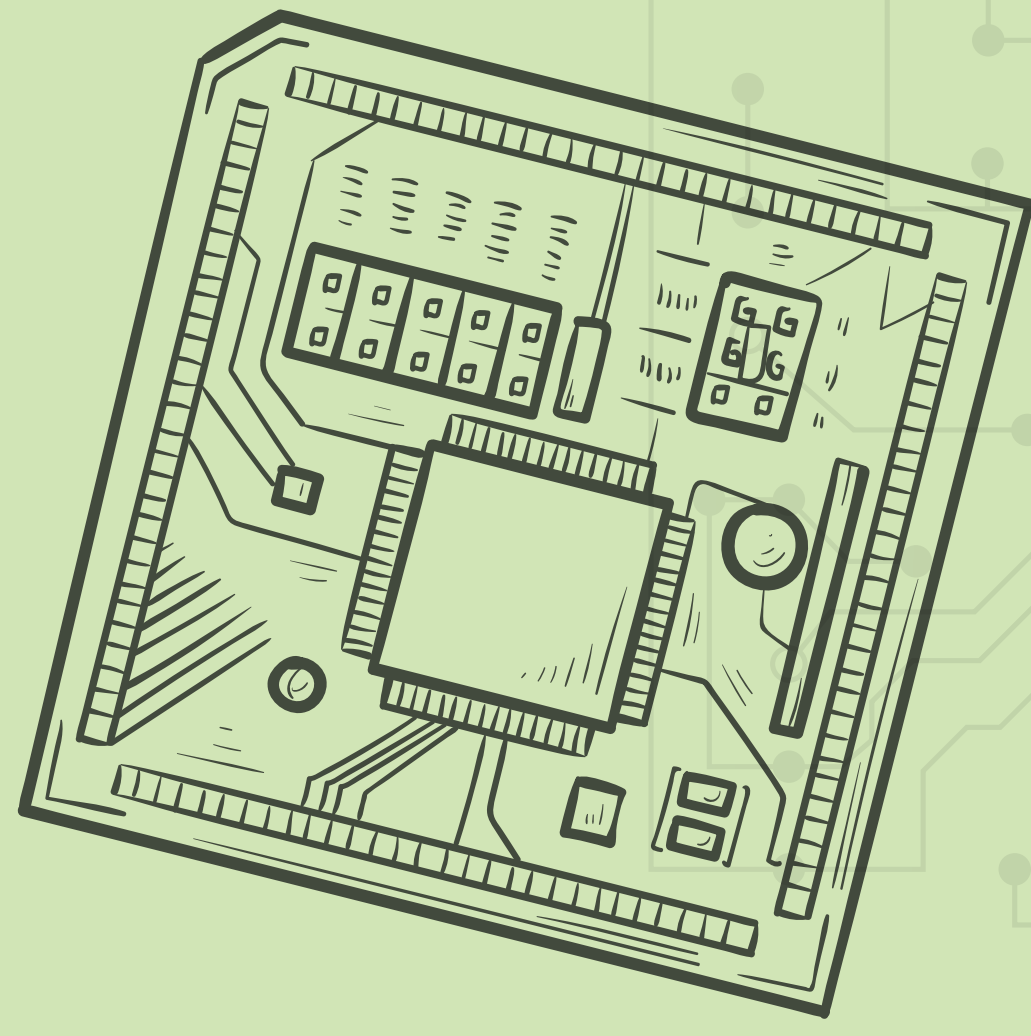
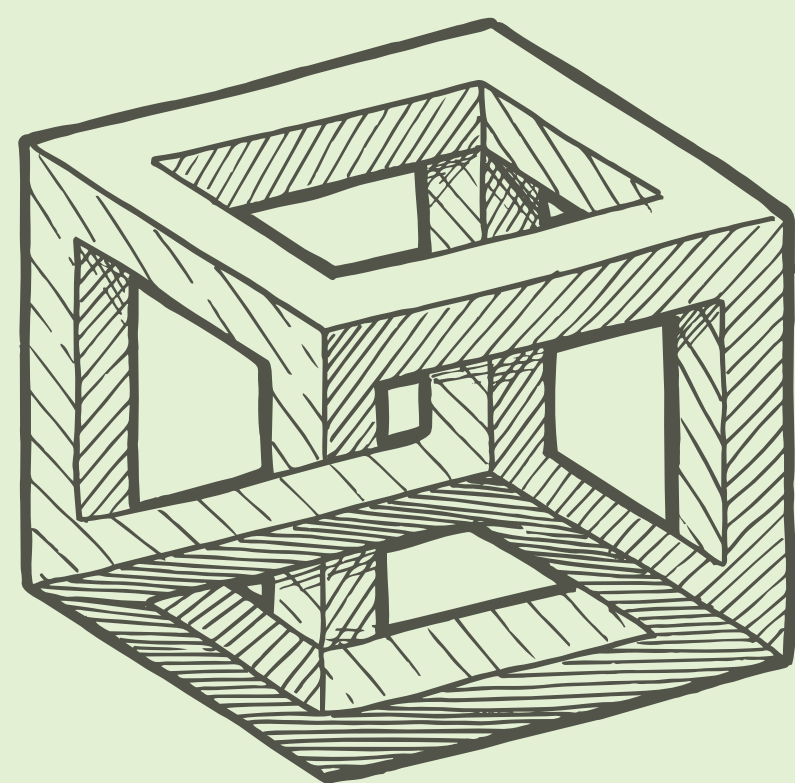


HUMAN FACTORS IN HARDWARE REVERSE ENGINEERING

CARINA WIESEN



HUMAN-COMPUTER INTERACTION



PSYCHOLOGICAL STUDIES

DEVELOPMENT OF METHODOLOGICAL APPROACHES

PROBLEM SOLVING



WOMEN IN IT SECURITY

Carina Wiesen is a postdoctoral researcher at the Educational Psychology and Technology Research Group at Ruhr-Universität Bochum (RUB), within the Cluster of Excellence CASA, as well as an associated guest researcher at the Max Planck Institute for Security and Privacy.

Her research focuses on human factors in hardware reverse engineering. She holds a bachelor's and a master's degree in Applied Cognitive and Media Science. After working in industry as a product manager for two years, she returned to academia as part of the interdisciplinary research college "SecHuman – Security for Humans in Cyberspace" in 2017 and completed her PhD in 2021.



casa.rub.de | hgi.rub.de

Concept and Design: HGI Annika Gödde & Conny Robrahn
Bildnachweise: Carina Wiesen: stock.adobe.com: exentia, Visual Generation, Vector Tradition, Nattle, Oleksandr Babich

